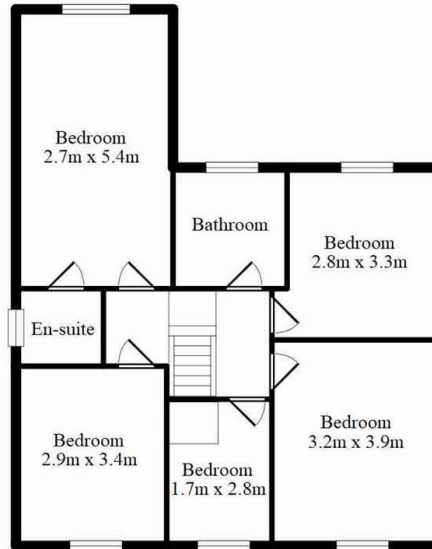
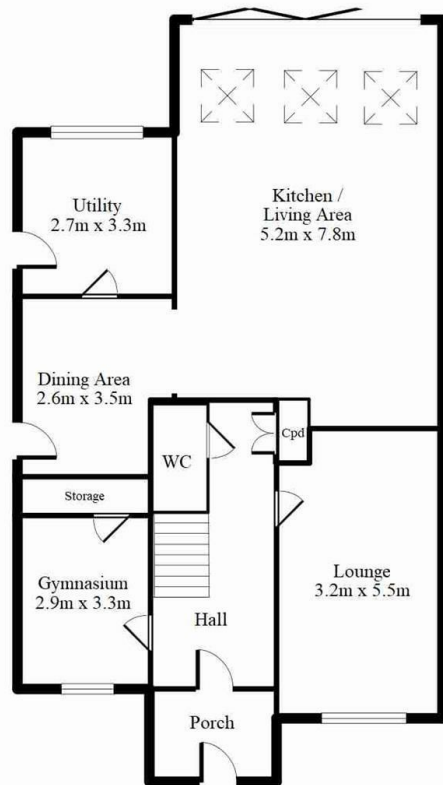




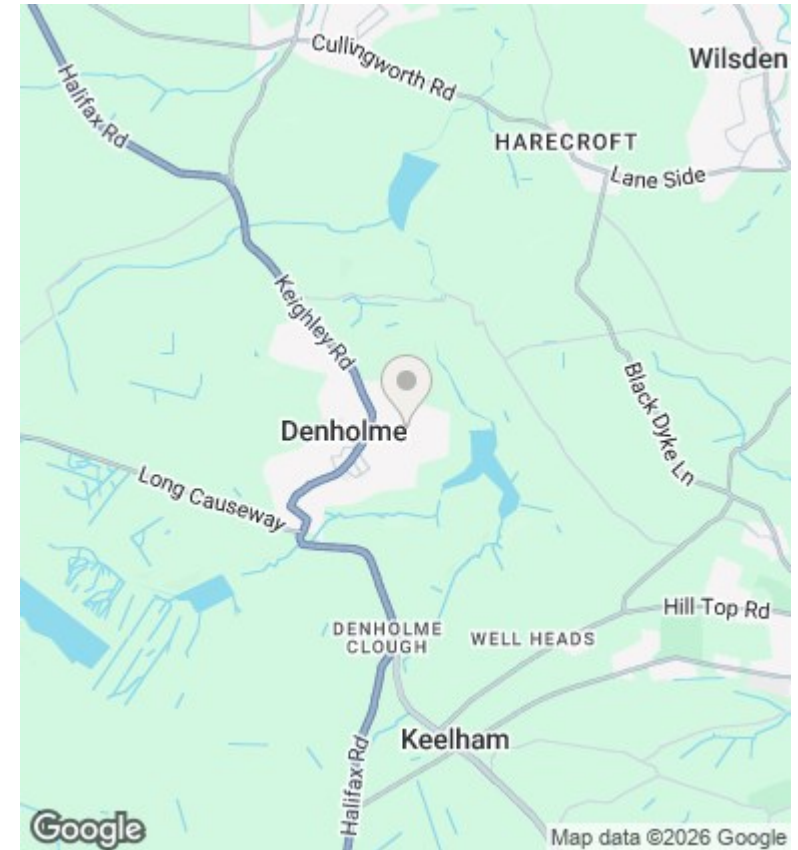
## 10 Foster Park Grove, Denholme, Bradford, BD13 4BQ

£450,000

- MODERN FIVE BEDROOM DETACHED
- FRONT & REAR DRIVEWAYS
- ENCLOSED GARDEN & DOUBLE GARAGE
- EARLY VIEWING IS ADVISED
- DECEPTIVELY SPACIOUS
- LARGE ENTERTAINING SPACE
- MULTIPLE RECEPTION ROOMS
- ENVIABLE POSITION WITH OPEN VIEWS
- PRESENTED TO A HIGH STANDARD
- FLEXIBLE LAYOUT



Every attempt has been made to ensure this floor plan is accurate, however their accuracy is not guaranteed. The floorplan is for illustrative purposes and should be used in that context. GPFMS 2026



## Directions

## Viewings

Viewings by arrangement only.  
Call 01274884040 to make an appointment.

## Council Tax Band

C

## EPC Rating:

D

Energy Efficiency Rating		
	Current	Potential
<i>Very energy efficient - lower running costs</i>		
(92 plus) <b>A</b>		
(81-91) <b>B</b>		
(69-80) <b>C</b>		77
(55-68) <b>D</b>	63	
(39-54) <b>E</b>		
(21-38) <b>F</b>		
(1-20) <b>G</b>		
<i>Not energy efficient - higher running costs</i>		
<b>England &amp; Wales</b>	EU Directive 2002/91/EC	